



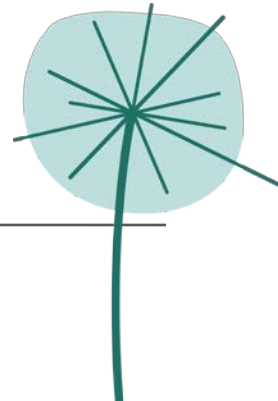
Adding Value to Planning

Gareth Price - 12<sup>th</sup> November 2013

# Local Nature Partnerships



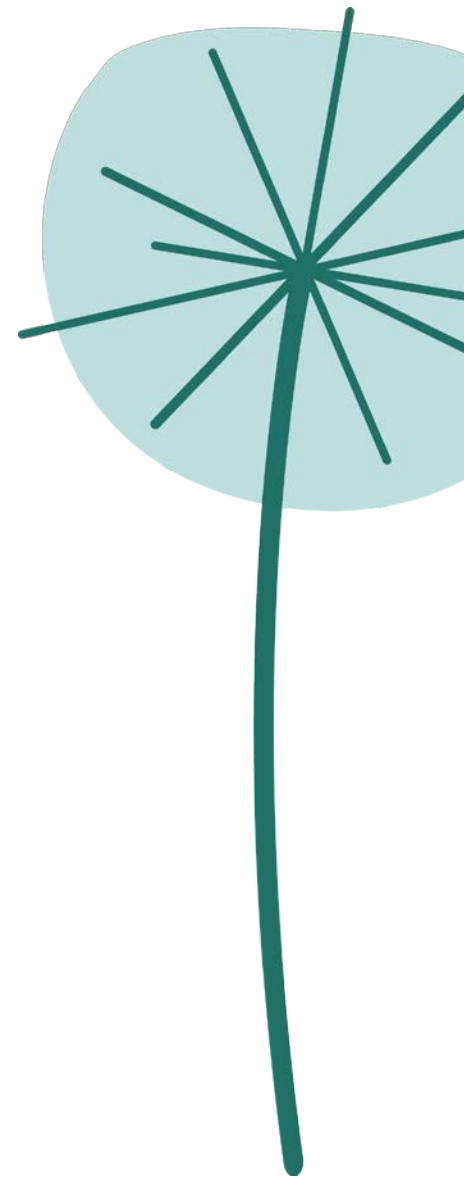
- Natural Environment White Paper
- Drive positive change in the local natural environment
- Take a strategic view
- Contribute to national environmental objectives
- Identify local ecological networks, alongside addressing local priorities
- Become local champions
- Influence decision-making
- Increase investment in nature



# Wild Anglia's mission

To change the way we think about our natural environment in Norfolk and Suffolk.

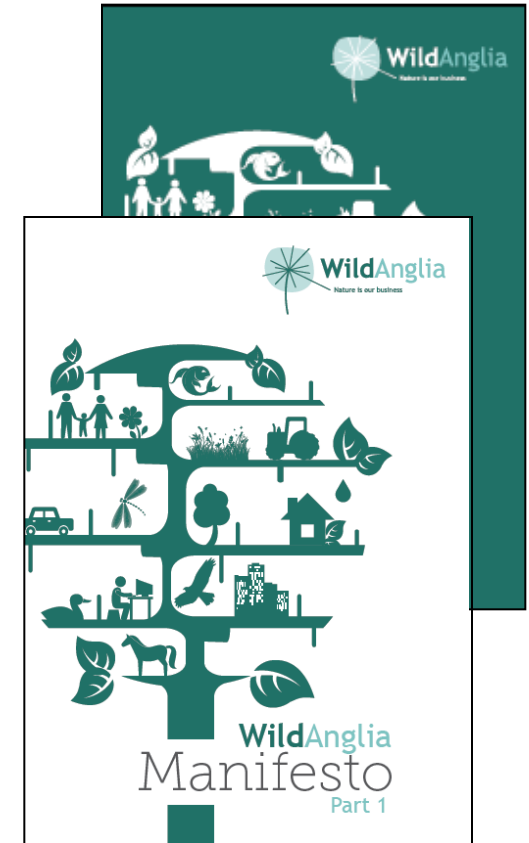
- Nature underpins economy & society
- Investing in this core asset is essential
- Nature on the agenda, everyone's business
- Counter-culture - see differently - not just nice about nature



# Wild Anglia manifesto

Two parts, one mission, four aims:

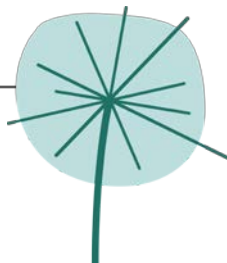
1. Growth
2. Green Infrastructure & Development
3. Strengthening Nature - on the ground
4. Healthy, happy society



# LNPs and Planning



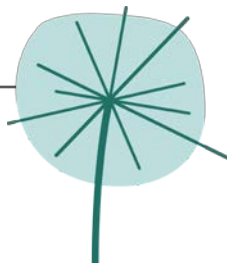
- “Important contribution to make to strategic planning matters within their area”
- For the purpose of planning, Local Nature Partnerships means “a body, designated by the Secretary of State, which is established for the purpose of protecting and improving the natural environment in an area and the benefits derived from it”
- NPPF Para. 165. Planning policies and decisions should be based on up-to-date information about the natural environment and other characteristics of the area including drawing, for example, from River Basin Management Plans. Working with Local Nature Partnerships where appropriate, this should include an assessment of existing and potential components of ecological networks.



# LNPs and Planning



- NPPF Para. 180. Local planning authorities should take account of different geographic areas, including travel-to-work areas. In two tier areas, county and district authorities should cooperate with each other on relevant issues. Local planning authorities should work collaboratively on strategic planning priorities to enable delivery of sustainable development in consultation with Local Enterprise Partnerships and Local Nature Partnerships.
- LNPs, are also now prescribed under the Duty to Cooperate in The Town and Country Planning (Local Planning) (England) Regulations 2012. This states that “councils and other bodies bound by the Duty must have regard to the views of Local Nature Partnerships in relation to strategic planning matters”



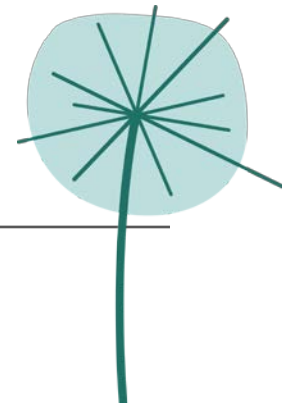
# Opportunities

## 1. Inform and influence

- Cross boundary strategy
- Guidance
- Highlight areas, habitats and species at risk
- Strengthening networks
- Supporting and building the evidence base

## 2. Promote and support “value added” delivery by utilising:

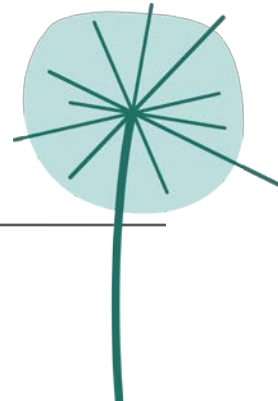
- CIL
- S106
- Bio-diversity offsetting
- Green Infrastructure
- LEP 1,000 hectare target



# So, how?



- ADD VALUE
- Complement Local Authorities
- Play to our strengths (e.g. as a not for profit company limited by guarantee)
- Use our networks
- Associations with the LEP

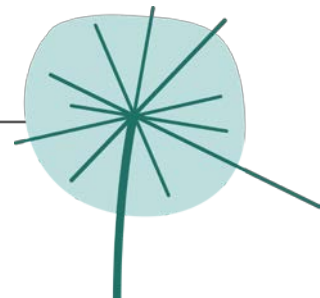




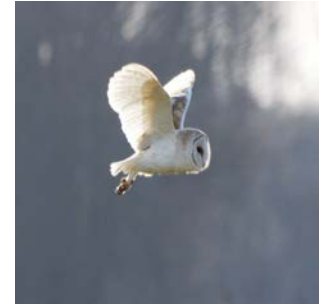
# What might this mean in practise?



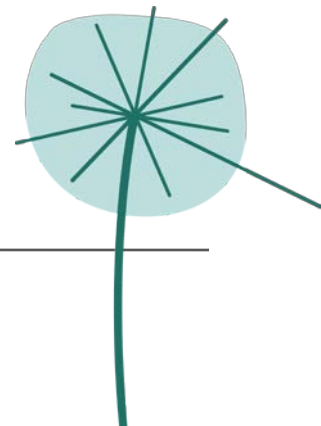
- Helping to define the status of the natural environment in relation to economic growth
- Encouraging a consistent approach to environmental strategy
- Developing overarching principles
- Being a part of the debate on major infrastructure proposals
- Promoting and supporting delivery of New Anglia's 1000 ha wild space target



# What might this mean in practise?



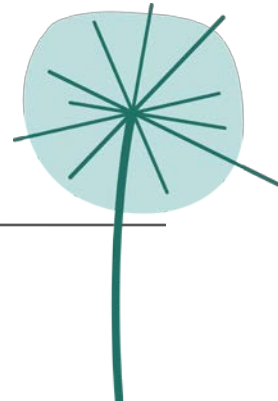
- Building and developing the evidence
  - a better understanding the “natural capital” of Norfolk and Suffolk
  - what delivery of Biodiversity 2020 might mean at the sub-regional, county and local level
  - enabling nature objectives to be fairly matched against competing demands for resourcing through CIL and supporting consistency of approach in it’s deployment
  - Bio-diversity offsetting and the values to be attributed to it within the Norfolk and Suffolk area



# Next steps



- Talk to the local authorities, LEP, others
- Establish a task group
- Agree our TOR
- Agree priorities for our “added value” role
- Develop “test-bed” pilot areas





[www.wildanglia.org](http://www.wildanglia.org)