



Planners' Update

October 2014
Issue 3
Inside this issue:

Standing Advice for
Ancient Woodland and
Veteran Trees **1**

Suffolk Planning &
Biodiversity seminar
November 2014 **1**

Meeting the
Biodiversity Duty:
New guidance &
Priority Species **2**

On-line tool to help
planners assess
development issues
around SSSIs **2**

Ministers publish latest
Green Belt Guidance **3**

Biodiversity Guidance **3**
for Solar
Developments
published

BAP species focus **3**

SBP planning support **3**
group members /
contact us

Welcome to the SBP Planners' Update!

We aim to provide accessible information about biodiversity issues to support your planning work as and when information becomes available. If we can help with training events, factsheets or in any other way, please do contact us and we'll do our best to provide what you need. Previous Updates are available on the SBP [Planners' Page](#) >

Standing Advice for Ancient Woodland and Veteran Trees

Natural England and the Forestry Commission have published a revision of the Standing Advice for Ancient Woodland and Veteran Trees. The advice was published in April 2014 and applies to all planning authorities. To find out more and to read Richard Barnes (Woodland Trust) blog [click here](#) > There are links to the Advice itself and the Forestry Commission hosting page with an assessment checklist and case studies.

Suffolk Planning and Biodiversity seminar - book your place now!

25th Nov West Suffolk house, Bury St Edmunds



INVITATION TO 10th Annual Seminar on Planning and Biodiversity



Tuesday 25th November 2014

9:00 a.m. - 4:00 p.m.

West Suffolk House, Western Way, Bury St Edmunds, IP33 3YU

We aim to :

- Provide an overview of the latest national and county-level developments & best practice related to spatial planning, development management and biodiversity.
- Foster an exchange of experience about biodiversity issues in planning.

This event is primarily for planners in Suffolk and Norfolk

Topics

- Key biodiversity issues in Development Management and Spatial Planning
- Delivering Green Infrastructure - from concept to implementation
- Suffolk Nature Strategy
- Simple measures to benefit wildlife - 3 case studies
- The 'Dorset Protocol' - an innovative approach to European Protected Species
- Natural England - SSSI Impact Risk Zones
- Community Infrastructure Levy - funding for nature



Lunch is available at £6.25 (pay on the day) or bring your own

FREE entry , but please book early!

Please car share if possible /travel by public transport
(lifts available from Bury St. Edmunds station)

Contact: Gen Broad, Suffolk Biodiversity Partnership
Email: gen.broad@suffolk.gov.uk, tel: 01473 264308

This popular annual event is open to planners in Suffolk and Norfolk. The seminar is free, but **booking is essential**. Please visit the [Planners Page](#) > on our website to download the flyer, agenda and booking form.

We've used last year's feedback to develop this year's agenda, so it really covers what planners want including:

Key national issues
Green infrastructure
Simple, practical ways to help
wildlife through planning
The 'Dorset Protocol'
SSSI Impact Risk Zones
Community Infrastructure Levy

If you're a planner in Suffolk or Norfolk, please come along to find out about the latest best practice in planning and biodiversity and to network with colleagues.

Meeting the Biodiversity Duty for Public Authorities in Suffolk

Guidance on the Biodiversity Duty for Public Authorities launched

Under the Biodiversity Duty (Natural Environment and Rural Communities Act 2006), Public Authorities must consider how to conserve biodiversity in all their actions. On 13th October 2014, Defra and Natural England published guidance on how this should be achieved.

Visit Gov.UK >

SBP's Gateway to Priority (BAP) Species in Suffolk

Suffolk Biodiversity Partnership is helping Local Authorities to meet their Biodiversity Duty obligations through an accessible Gateway to Priority Species published in October 2014. Find the pages at www.suffolkbiodiversity.org and look for BAP Advice—Priority Species.

Suffolk Biodiversity Action Plan comprises those species on the UK List of Priority Species and Habitats 2007 which have been recorded in Suffolk over the past 50 years. Local Authorities and others can see clearly which BAP species may occur in particular BAP habitats.

Of course, BAP species may also be found in undesignated habitats, so the pages indicate characteristic species found in the wider countryside (such as farmland) and in the Built Environment (such as gardens).

A full list of the Priority Species and Habitats in Suffolk can be seen [here](#) >

And click [here](#) > to bring the Suffolk BAP to life in photos!

We would welcome any comments on these pages—please contact Gen Broad.

Find out more about the [Biodiversity Duty](#) >

The screenshot shows a web browser window with the URL www.suffolkbiodiversity.org/priority-species.aspx. The page header is blue with the text 'Suffolk Biodiversity Partnership' and a logo. Below the header is a navigation menu with links: Home, News, BAP Advice, Projects, Statutory Obligations, Partnership, and Contact Us. The main content area has a yellow header for 'Priority Species in Suffolk (Natural Environment & Rural Communities (NERC) Act 2006 Sec. 41)'. Below this is a section titled 'SBP's Gateway to Priority (BAP) Species in Suffolk' which contains text about the purpose of the gateway and links to a full list of species and photos. To the right of the text is a photograph of a 5-banded digger wasp on a yellow flower. Below the text is a 'Background' section with more information about the Biodiversity Duty and the Act. At the bottom is a 'Suffolk Biodiversity Action Plan (BAP) and Planning' section. The browser's address bar shows 'Suffolk County ...' and 'Imported From IE'.

On-line tool to help planners assess development issues around SSSIs

Natural England has developed an on-line tool to assess whether a proposed development is likely to affect SSSIs. The Impact Risk Zones dataset maps zones around each SSSI according to the particular sensitivities of the features for which it is notified and specifies the types of development that have the potential to have adverse impacts. Natural England uses the tool to make an initial assessment of the likely risk of impacts on SSSIs and to quickly determine which consultations are unlikely to pose risks and which require further consideration. Publishing the Impact Risk Zones will allow Local Planning Authorities, developers and other partners to make use of this key evidence tool.

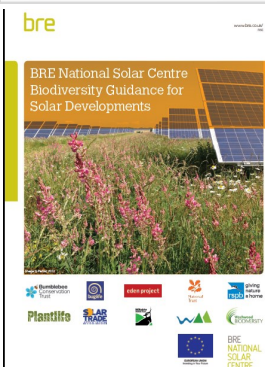
Note that there will be a presentation by Natural England on this topic at the Biodiversity & Planning seminar

Ministers publish latest Green Belt Guidance 6th Oct

Communities Secretary Eric Pickles and Housing and Planning Minister Brandon Lewis have insisted that thousands of brown field sites are available for development, and should be prioritised.

New advice reaffirms how councils should use their local plan to draw on protection in the NPPF to safeguard their local area against urban sprawl, and protect the green lungs around towns and cities.

[Read the Department for Communities and Local Government press release >](#)



Biodiversity Guidance for Solar Developments published

Solar farms have important opportunities for wildlife, for example, wildflower meadows and hedgerows can be planted and ponds created. The [guidance >](#) is available to download from BRE's website at bre.co.uk. For more information contact olly.watts@rspb.org.uk

BAP species focus

Cornflower *Centaurea cyanus*: an annual plant found on sandy, neutral to acid soils. Once associated with arable crops and common in the first half of the 19th century, it is now rare due to improved seed cleaning and the use of herbicides. It is also a Nationally Scarce species. [Read the Wildlife Trusts factsheet >](#)



Suffolk Biodiversity Partnership

SBRC - Ipswich Museum
High Street
Ipswich
Suffolk
IP1 3QH
Phone: 01473 264308
Mobile: 078948 85337
E-mail: gen.broad@suffolk.gov.uk

Please send us your feedback!

Is this newsletter helpful?

What topics would you like to see covered?



Suffolk Biodiversity
Partnership

SBP Planning Support Group members:

Sarah Barker, Ipswich Borough Council
Gen Broad, Suffolk Biodiversity Partnership
Simone Bullion, Suffolk Wildlife Trust
Alison Collins, Natural England
Jaki Fisher, St Edmundsbury Borough Council
Sue Hooton, Senior Ecologist, Suffolk County Council
James Meyer, Suffolk Wildlife Trust
Jacqui Miller, RSPB
Julie Sheldrick, Forest Heath District Council

Visit us at

www.suffolkbiodiversity.org/planners-page.aspx